

PK 23002

Performance

PALFINGER

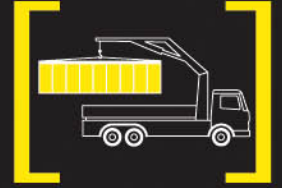


LONGEST OUTREACH IN ITS CLASS



THE PK 23002: WITH POWER LINK PLUS FOR EVEN MORE-EFFICIENT WORKING

With its 8 hydraulic outreaches the PK 23002 *Performance* has a maximum outreach of 21.3 metres. It is therefore ideally suitable in particular for working at great heights, and also proves its strength in out-of-the-ordinary jobs: Through POWER LINK PLUS the PK 23002 *Performance* has a knuckle boom which can be angled upwards 15° – so that working inside buildings, for example, is not a problem.



The standard inclusion of Functional Design and Advanced Package makes the PK 23002 *Performance* your optimal working unit.



UNRIVALLED IN CONVENIENCE AND SAFETY



THE PERFECT INTERPLAY OF ENGINEERING, FUNCTION AND DESIGN

Functional design

- Enclosure of the entire electronic system
- Enclosure in the area of the control valve
- Enclosure of the hoses behind the crane column
- Spiral tube hose between base frame and crane column



Return oil utilisation

The high speed of the extension system is impressive. It results from return oil utilisation, which is installed as standard, and the generously dimensioned hydraulic lines. This makes for increased efficiency in any type of working.



Advanced Package

- Oil cooler installed
- Electronic HPLS (High Power Lifting System)
- PALFINGER radio remote control
- PALTRONIC 50
- Functional Design
- External 200 litre additional tank



Load-holding valves

The prevent the crane arm from dropping and are mounted as standard on the elevating and knuckle-boom cylinder as well as on the extension arm. The valves are positioned in such a way that they are protected from being damaged.



Control valve

In combination with the PALFINGER radio remote control system the load-sensing proportional valve makes for highly sensitive crane control.

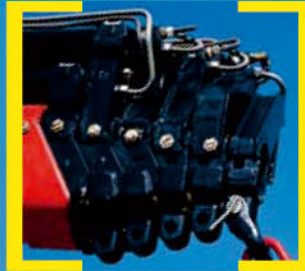


Outriggers

The standard 4.8 m outriggers ensure optimum stability. As an option a 6.6 m telescopic outrigger is available. The pipework to the support cylinders is internally routed in the outriggers, providing a high level of protection from damage at all times. On request, the outriggers can be supplied with support cylinders that swivel up hydraulically through 180°.



OPENING NEW PERSPECTIVES IN CRANE DUTY



Adjustable slide blocks

These ensure optimal lateral guidance of the extension system.

POWER LINK PLUS

PALFINGER has specially developed this knuckle boom so that it can be angled upwards by 15 degrees. It stands out by virtue of the excellent movement geometry. Even in the most restricted spaces, difficult crane jobs can be carried out with ease.



Central lubrication

For all bearings on the base frame.



Extension system

The extension cylinders are guided in Jordal rails over rollers.

Height compensation of the extension cylinders.



Hose equipment for accessories

With this option you can provide the oil supply to accessories. The hoses are routed in compact troughs and plastic link chains. They are therefore very well protected.

AOS – optional

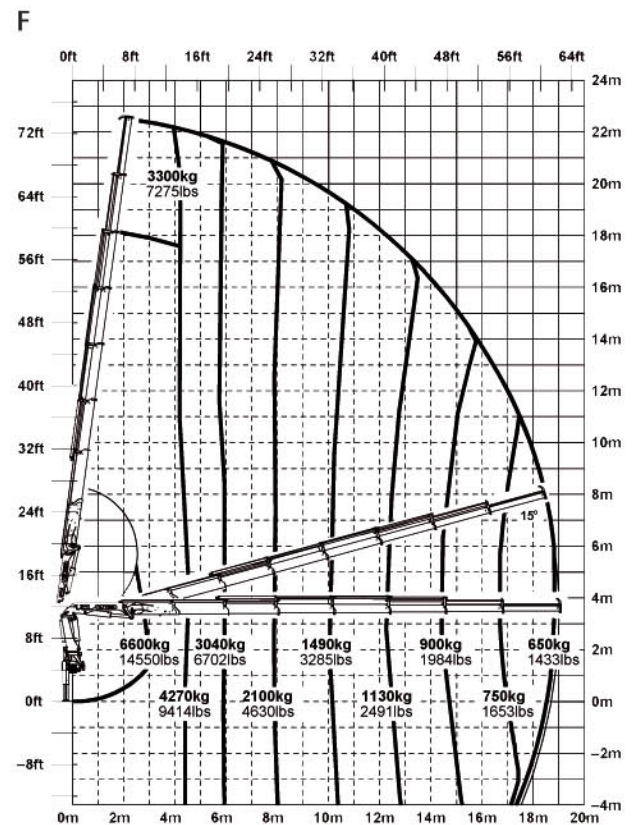
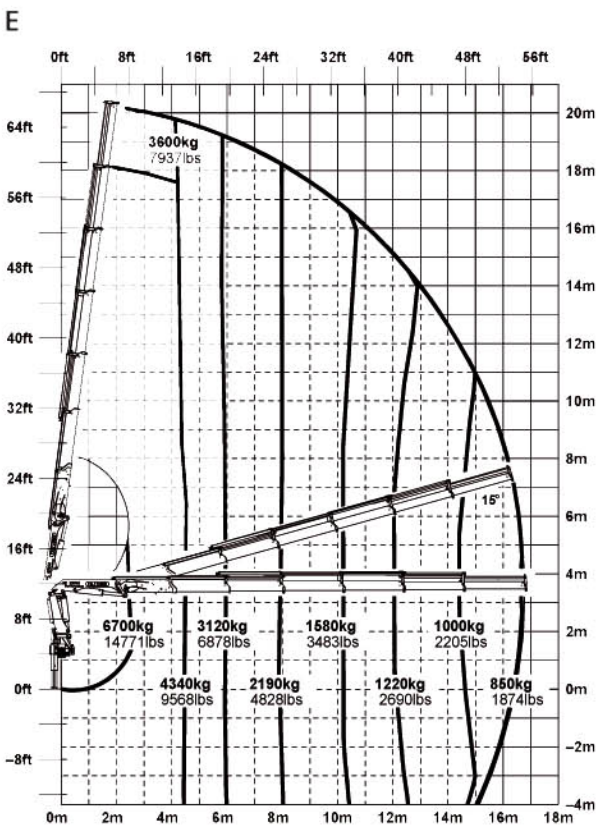
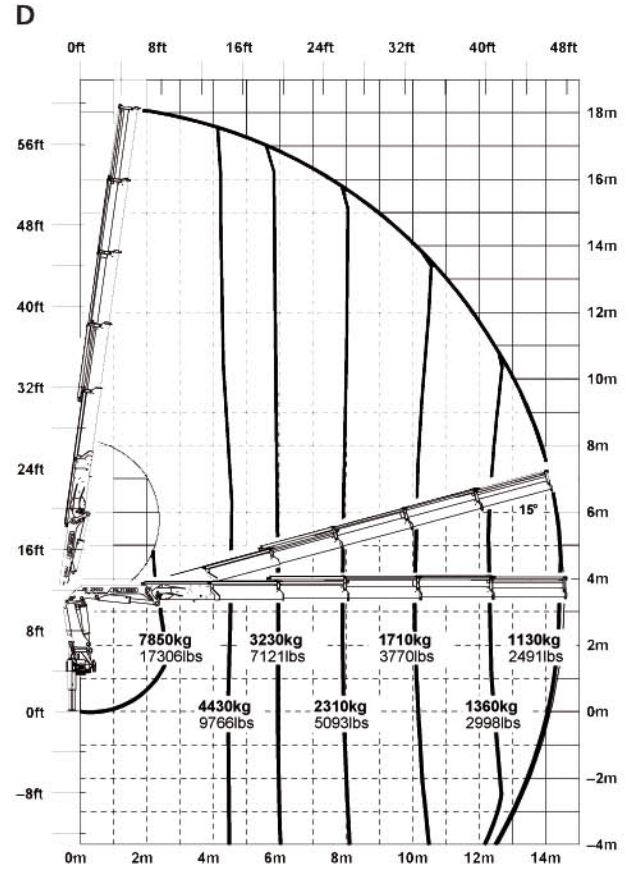
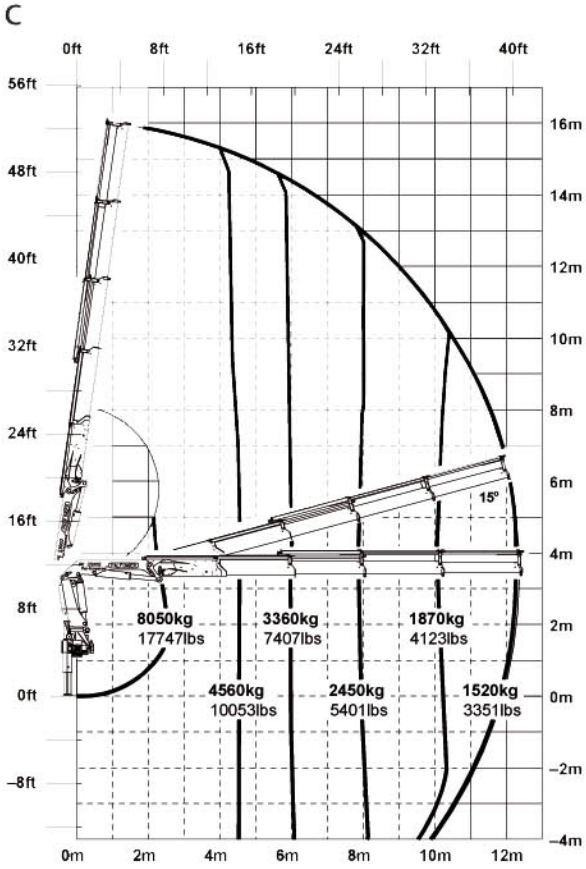
The Active Oscillation Suppression system, which is available exclusively from PALFINGER, compensates for jolts and sharp stress cycles caused by crane operation. Because oscillations are eradicated, the crane can work with pin-point accuracy much more quickly and therefore more cost-efficiently.

Internally routed oil ducts

The internally routed oil ducts permit a compact design for the extension system and ensure perfect protection from damage.

EXCELLENT MOVEMENT GEOMETRY FOR OUT-OF-THE ORDINARY JOBS

PK 23002 Performance



FURTHER PROOF OF PALFINGER'S INNOVATIVE PROWESS

Max. lifting capacities

PK 23002 Performance A			
Max. lifting capacities			
Outreach		Capacity	
hydraulic			
4.6 m	15' 1"	4810 kg	10600 lbs
6.0 m	19' 8"	3640 kg	8020 lbs
7.9 m	25' 11"	2760 kg	6080 lbs

PK 23002 Performance B			
Max. lifting capacities			
Outreach		Capacity	
hydraulic			
4.6 m	15' 1"	4680 kg	10320 lbs
6.0 m	19' 8"	3500 kg	7720 lbs
7.9 m	25' 11"	2600 kg	5730 lbs
10.1 m	33' 2"	2020 kg	4450 lbs

PK 23002 Performance C			
Max. lifting capacities			
Outreach		Capacity	
hydraulic			
4.6 m	15' 1"	4560 kg	10050 lbs
6.0 m	19' 8"	3360 kg	7410 lbs
7.9 m	25' 11"	2450 kg	5400 lbs
10.1 m	33' 2"	1870 kg	4120 lbs
12.2 m	40' 0"	1520 kg	3350 lbs
manual			
14.4 m	47' 3"	1210 kg	2670 lbs
16.6 m	54' 6"	970 kg	2140 lbs
18.8 m	61' 8"	800 kg	1760 lbs

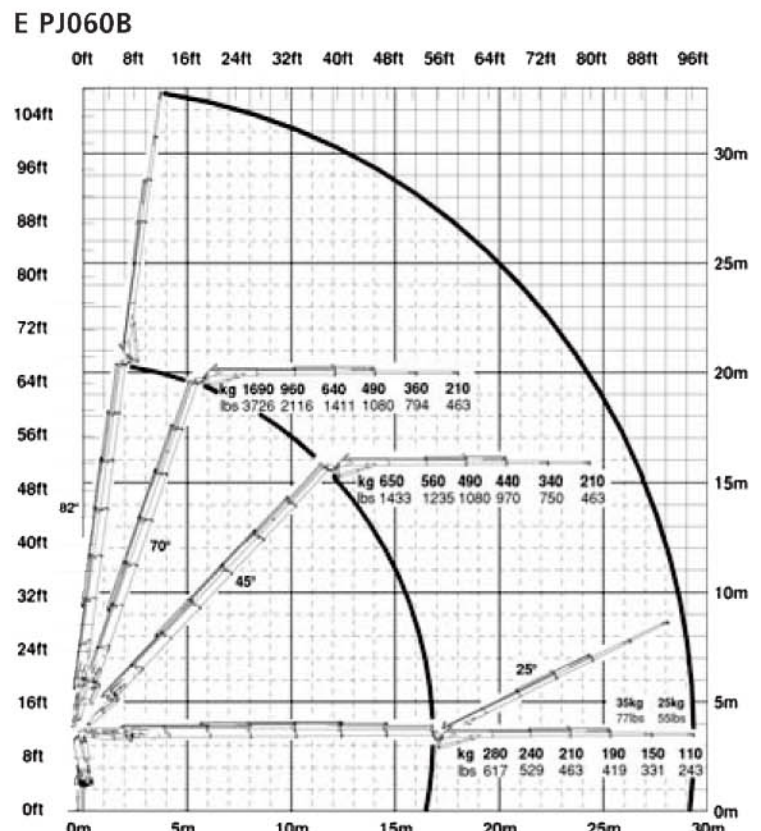
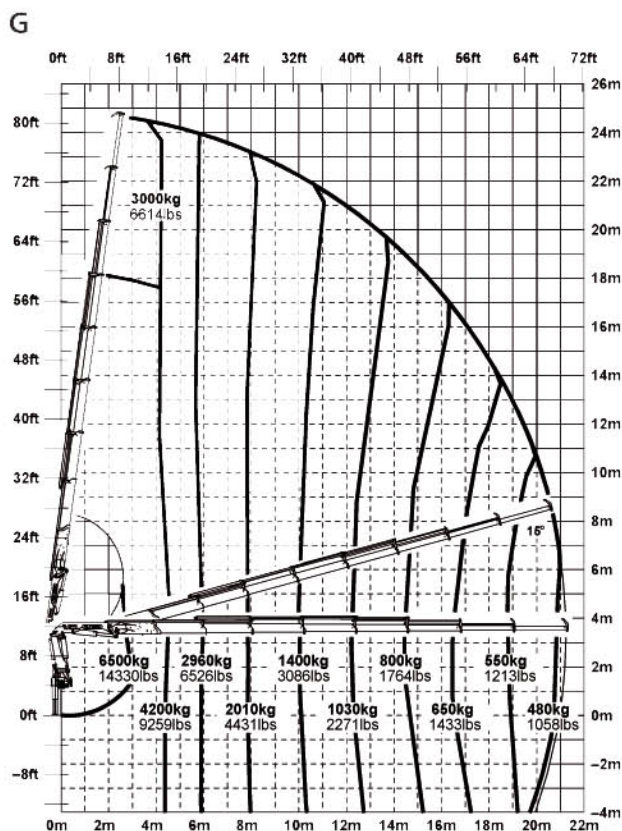
PK 23002 Performance D			
Max. lifting capacities			
Outreach		Capacity	
hydraulic			
4.6 m	15' 1"	4430 kg	9770 lbs
6.0 m	19' 8"	3230 kg	7120 lbs
7.9 m	25' 11"	2310 kg	5090 lbs
10.1 m	33' 2"	1710 kg	3770 lbs
12.2 m	40' 0"	1360 kg	3000 lbs
14.4 m	47' 3"	1130 kg	2490 lbs
manual			
16.7 m	54' 9"	910 kg	2010 lbs
18.8 m	61' 8"	740 kg	1630 lbs
21.0 m	68' 11"	620 kg	1370 lbs

PK 23002 Performance E			
Max. lifting capacities			
Outreach		Capacity	
hydraulic			
4.6 m	15' 1"	4340 kg	9570 lbs
6.0 m	19' 8"	3120 kg	6880 lbs
7.9 m	25' 11"	2190 kg	4830 lbs
10.1 m	33' 2"	1580 kg	3480 lbs
12.2 m	40' 0"	1220 kg	2690 lbs
14.4 m	47' 3"	1000 kg	2200 lbs
16.7 m	54' 9"	850 kg	1870 lbs
manual			
18.8 m	61' 8"	690 kg	1520 lbs
21.0 m	68' 11"	580 kg	1280 lbs
23.0 m	75' 6"	490 kg	1080 lbs

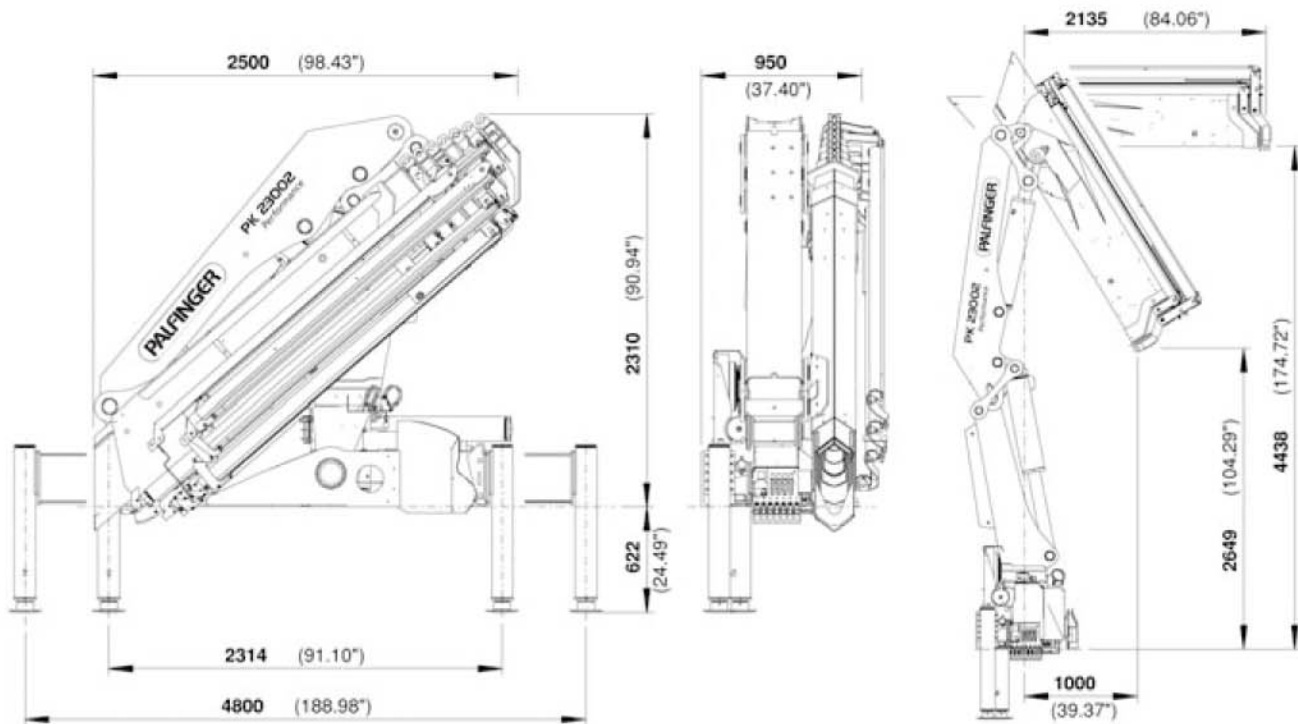
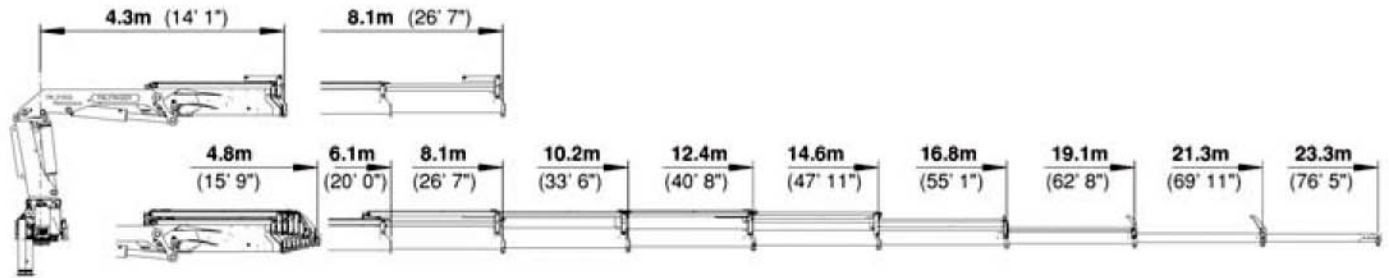
PK 23002 Performance F			
Max. lifting capacities			
Outreach		Capacity	
hydraulic			
4.6 m	15' 1"	4270 kg	9410 lbs
6.0 m	19' 8"	3040 kg	6700 lbs
7.9 m	25' 11"	2100 kg	4630 lbs
10.1 m	33' 2"	1490 kg	3280 lbs
12.2 m	40' 0"	1130 kg	2490 lbs
14.4 m	47' 3"	900 kg	1980 lbs
16.7 m	54' 9"	750 kg	1650 lbs
18.9 m	62' 0"	650 kg	1430 lbs
manual			
21.1 m	69' 3"	540 kg	1190 lbs
23.1 m	75' 9"	460 kg	1010 lbs

PK 23002 Performance G			
Max. lifting capacities			
Outreach		Capacity	
hydraulic			
4.6 m	15' 1"	4200 kg	9260 lbs
6.0 m	19' 8"	2960 kg	6530 lbs
7.9 m	25' 11"	2010 kg	4430 lbs
10.1 m	33' 2"	1400 kg	3090 lbs
12.2 m	40' 0"	1030 kg	2270 lbs
14.4 m	47' 3"	800 kg	1760 lbs
16.7 m	54' 9"	650 kg	1430 lbs
18.9 m	62' 0"	550 kg	1210 lbs
21.1 m	69' 3"	480 kg	1060 lbs
manual			
23.1 m	75' 9"	410 kg	900 lbs

The outreaches stated are with a boom angle of 20° and are therefore not the maximum.



OPTIMISED OUTREACH COUPLED WITH TECHNOLOGICAL REFINEMENT



PK 23002 Performance		
Technical Specifications (DIN 15018 H1-B3)		
Max. lifting moment	22.3 mt/218.7 kNm	161250 ft.lbs
Max. lifting capacity	8500 kg/83.4 kN	18740 lbs
Max. hydraulic outreach	21.3 m	69' 11"
Max. outreach (with fly-jib)	27.4 m	89' 11"
Slewing angle	400°	

PK 23002 Performance		
Standard crane		
Slewing torque	2.7 mt/26.5 kNm	19540 ft.lbs
Outreach	8.1 m	26' 7"
Stabilizer spread standard	4.8 m	15' 9"
Stabilizer spread max.	6.6 m	21' 8"
Fitting space required	0.95 m	3' 1"
Width folded	2.5 m	8' 2"
Max. operating pressure	330 bar	4785 psi
Recommended pump capacity with RC- control and LS-system	from 75 l/min	16.5 imp.gal./min 19.8 US gal./min
	to 100 l/min	22.0 imp.gal./min 26.4 US gal./min
Dead weight standard crane	2489 kg	5490 lbs

Applications shown in the leaflet do not always correspond to the standard specifications. Country-specific regulations must be considered for the crane installation.

